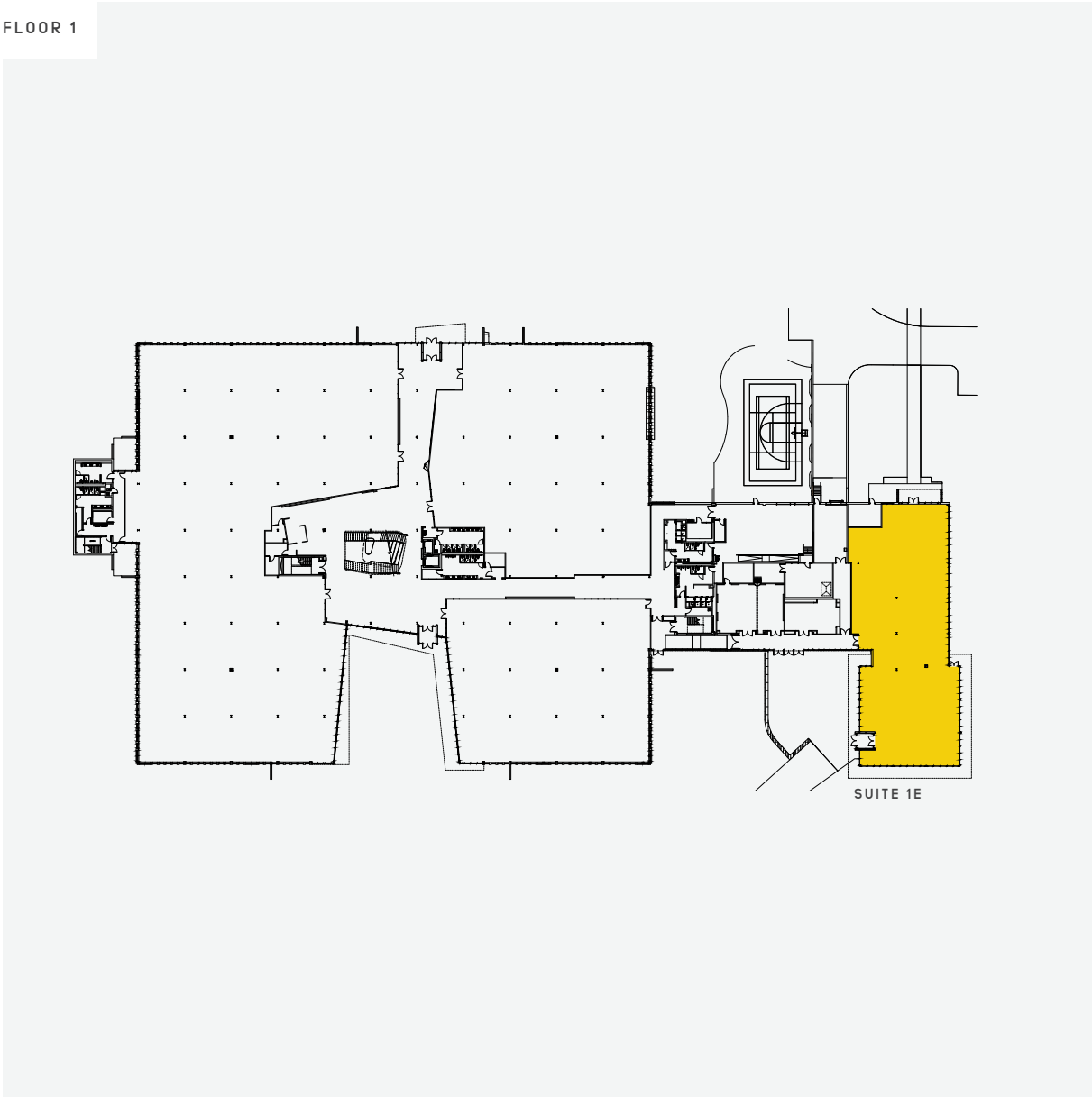


FLOOR 1



## ❖ Suite 1E

Size: 10,641 rsf

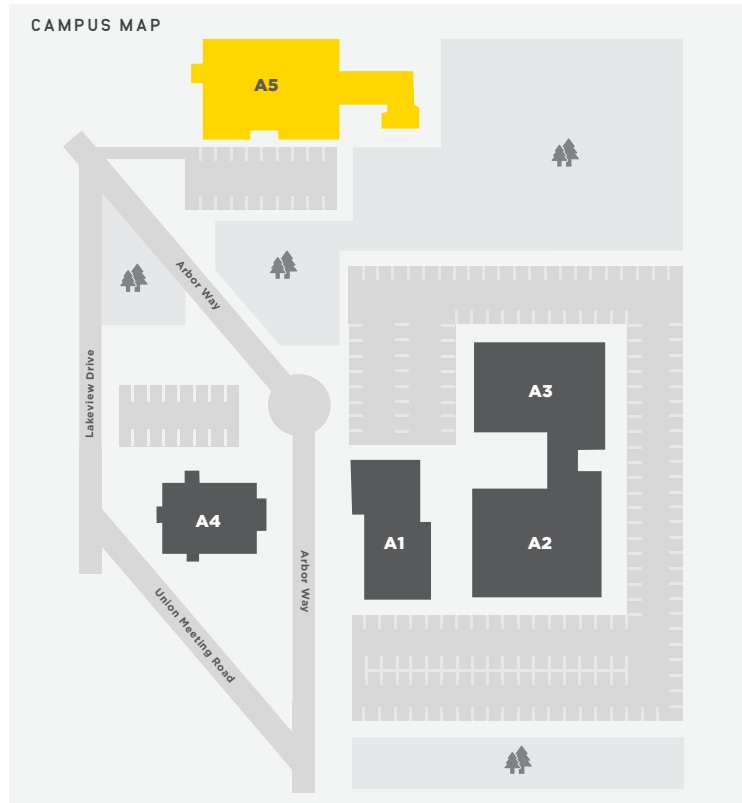
Available now

Highlights:

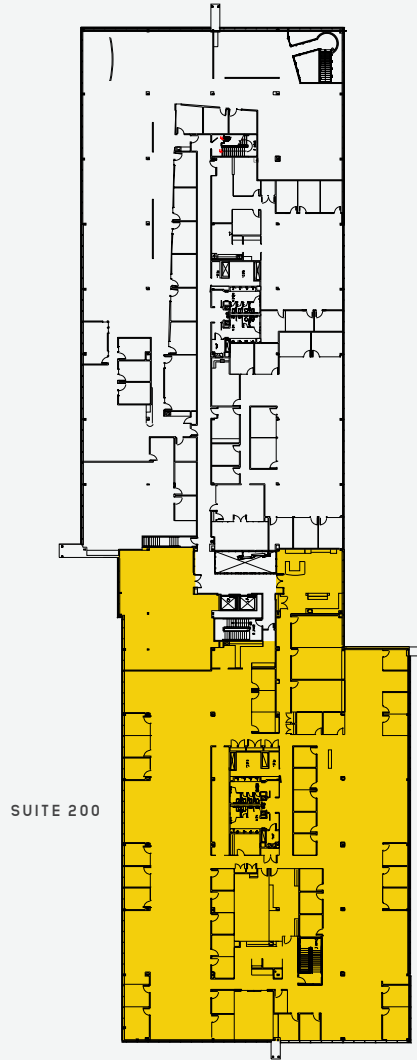
- ❖ New amenity center includes fitness with locker rooms, cafe with coffee barista, training room, board room, and basketball court

- ❖ New construction, building delivered March 2018

### CAMPUS MAP



FLOOR 2



## ❖ Suite 200

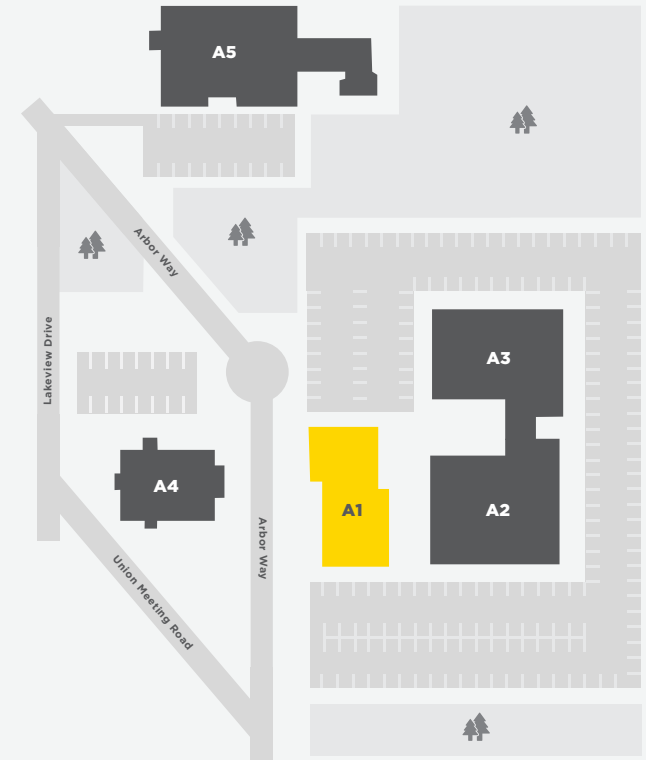
Size: 28,843 rsf

Available now

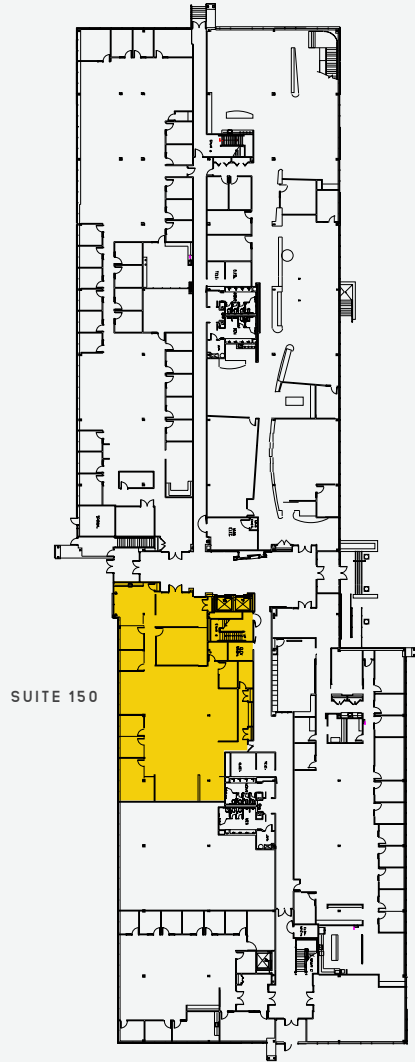
Highlights:

- ❖ High-end finishes
- ❖ 35 private offices
- ❖ Private restrooms
- ❖ Three boardrooms
- ❖ Bullpen for +125 seats
- ❖ Three sides of glass

### CAMPUS MAP



FLOOR 1



## ❖ Suite 150

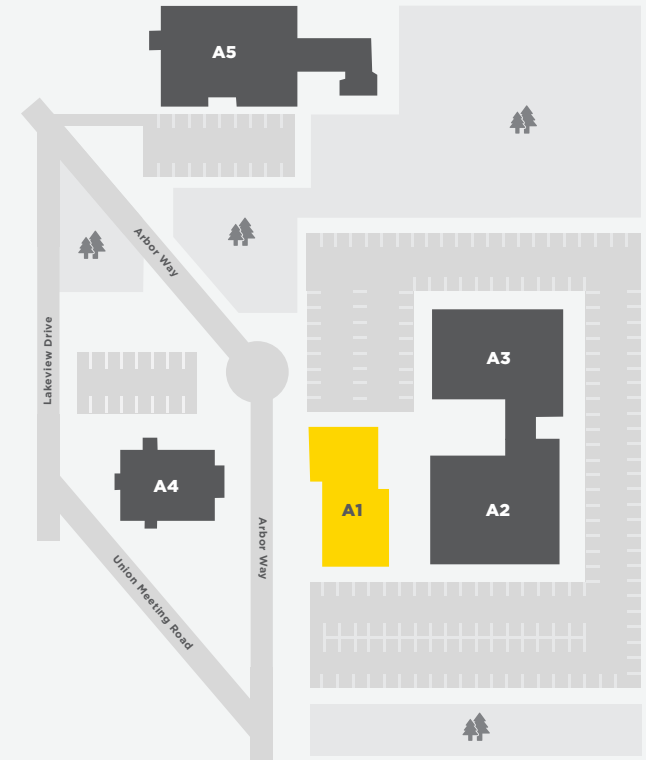
Size: 5,990 rsf

Available now

Highlights:

- ❖ High-end finishes
- ❖ Tech space
- ❖ Mix of open and drop ceilings
- ❖ Lobby exposure
- ❖ Furnished

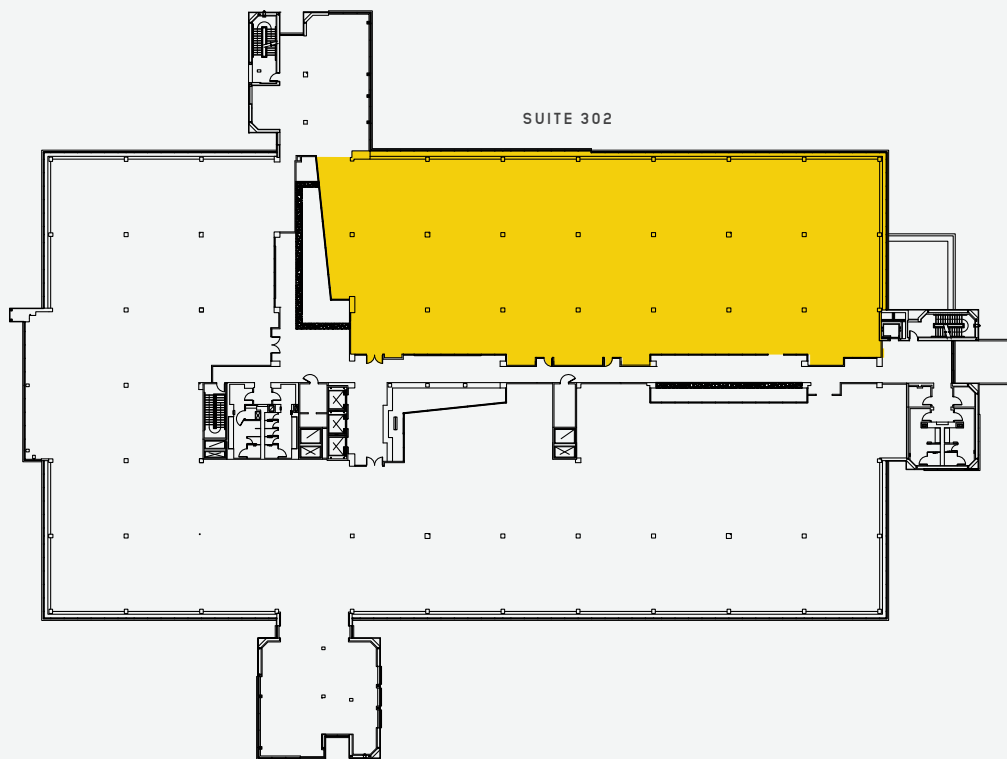
CAMPUS MAP





Arborcrest

FLOOR 3



## ❖ Suite 302

Size: 17,543 rsf

Available now

### CAMPUS MAP

